

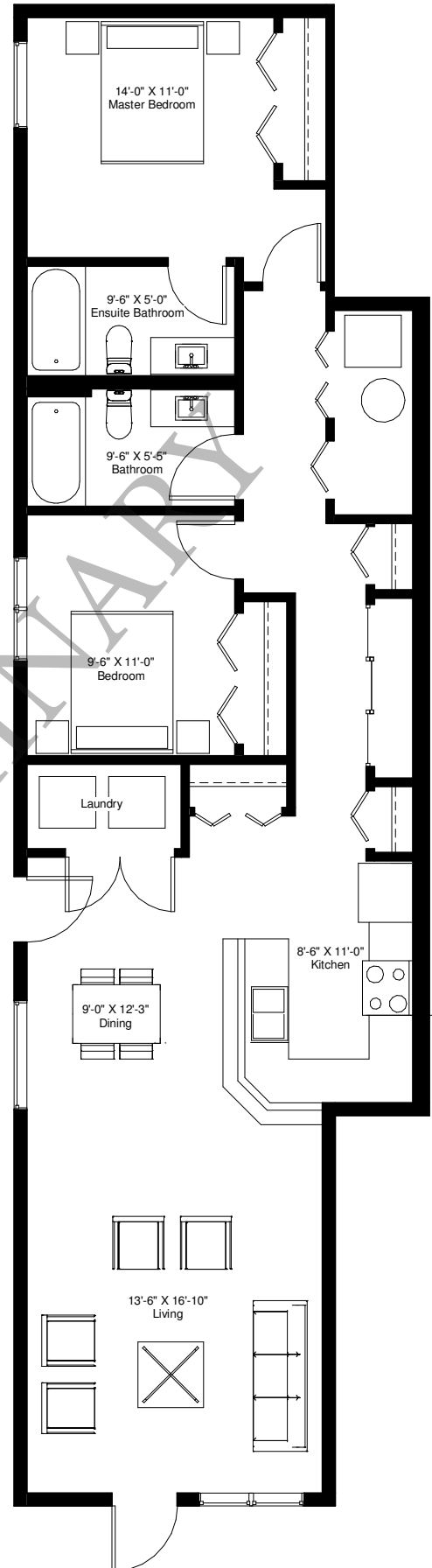
Grosvenor Court

Executive Rental Suites

unit 1A - 1135 sqft

Features:

- Modern Kitchens with Quartz Countertops
- In-suite Laundry
- 9 Foot Wide Patio Doors
- Large Balconies / Private Yards
- Energy Efficient Furnace, HRV & A/C
- Individual Parking per Suite



889GROSVENOR.COM



Darryl Walsh

204-297-0860

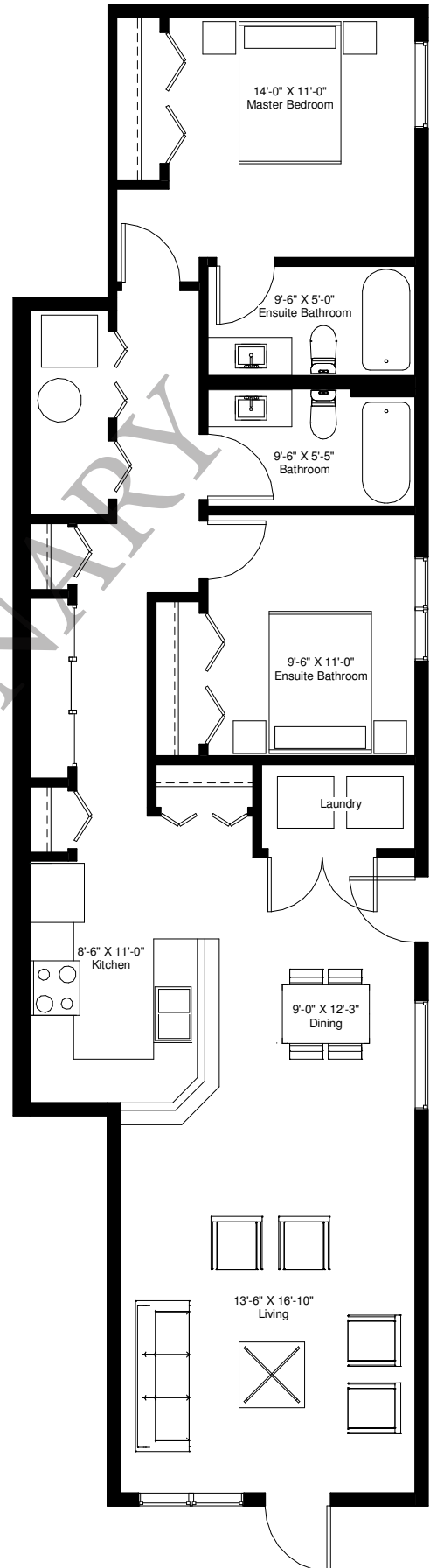
Grosvenor Court

Executive Rental Suites

unit 1B - 1135 sqft

Features:

- Modern Kitchens with Quartz Countertops
- In-suite Laundry
- 9 Foot Wide Patio Doors
- Large Balconies / Private Yards
- Energy Efficient Furnace, HRV & A/C
- Individual Parking per Suite



889GROSVENOR.COM



Darryl Walsh

204-297-0860

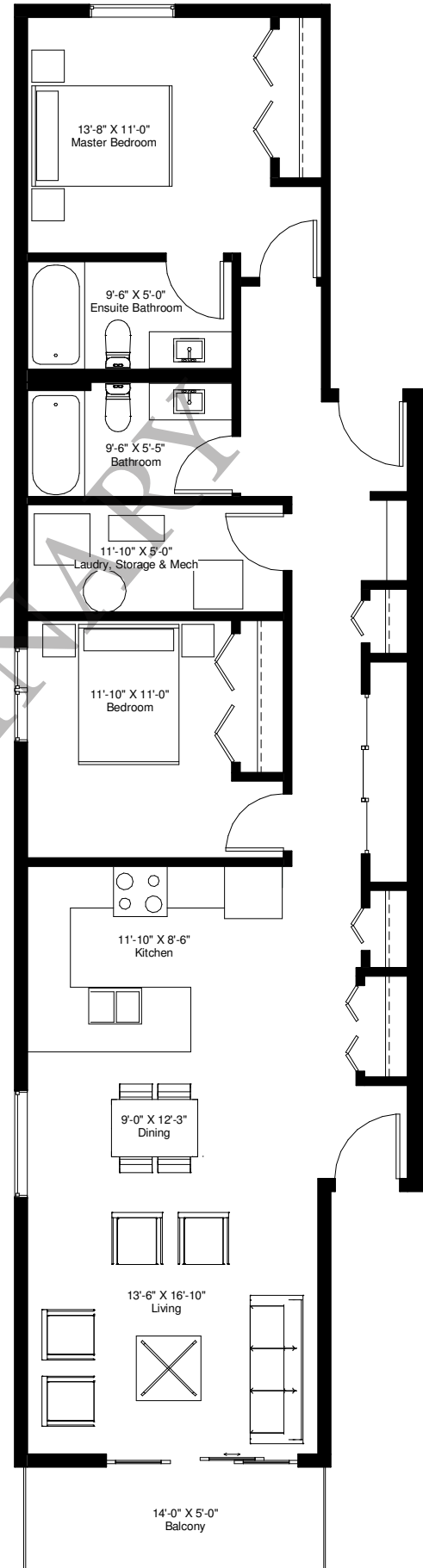
Grosvenor Court

Executive Rental Suites

unit 2A - 1123 sqft

Features:

- Modern Kitchens with Quartz Countertops
- In-suite Laundry
- 9 Foot Wide Patio Doors
- Large Balconies / Private Yards
- Energy Efficient Furnace, HRV & A/C
- Individual Parking per Suite



889GROSVENOR.COM



Darryl Walsh

204-297-0860

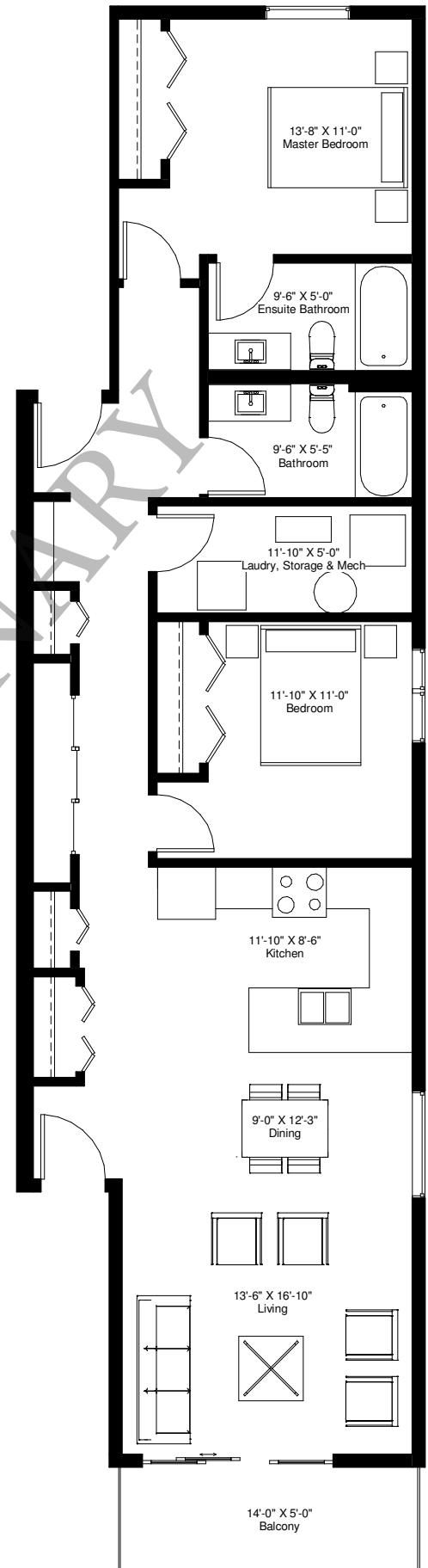
Grosvenor Court

Executive Rental Suites

unit 2B - 1123 sqft

Features:

- Modern Kitchens with Quartz Countertops
- In-suite Laundry
- 9 Foot Wide Patio Doors
- Large Balconies / Private Yards
- Energy Efficient Furnace, HRV & A/C
- Individual Parking per Suite



889GROSVENOR.COM



Darryl Walsh

204-297-0860

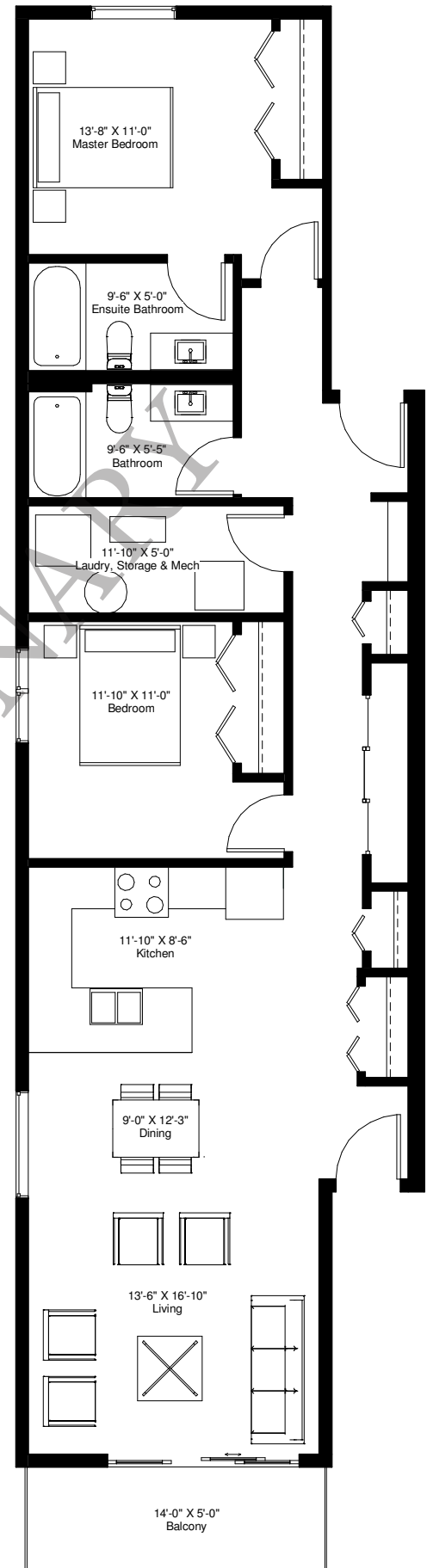
Grosvenor Court

Executive Rental Suites

unit 3A - 1123 sqft

Features:

- Modern Kitchens with Quartz Countertops
- In-suite Laundry
- 9 Foot Wide Patio Doors
- Large Balconies / Private Yards
- Energy Efficient Furnace, HRV & A/C
- Individual Parking per Suite



889GROSVENOR.COM



Darryl Walsh

204-297-0860

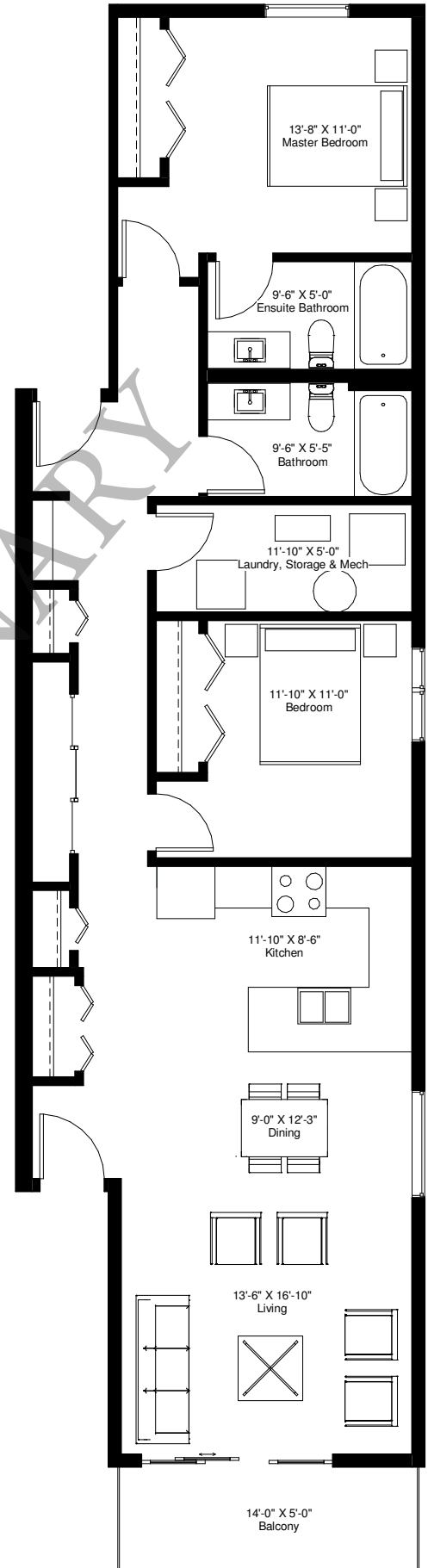
Grosvenor Court

Executive Rental Suites

unit 3B - 1123 sqft

Features:

- Modern Kitchens with Quartz Countertops
- In-suite Laundry
- 9 Foot Wide Patio Doors
- Large Balconies / Private Yards
- Energy Efficient Furnace, HRV & A/C
- Individual Parking per Suite



889GROSVENOR.COM



Darryl Walsh

204-297-0860